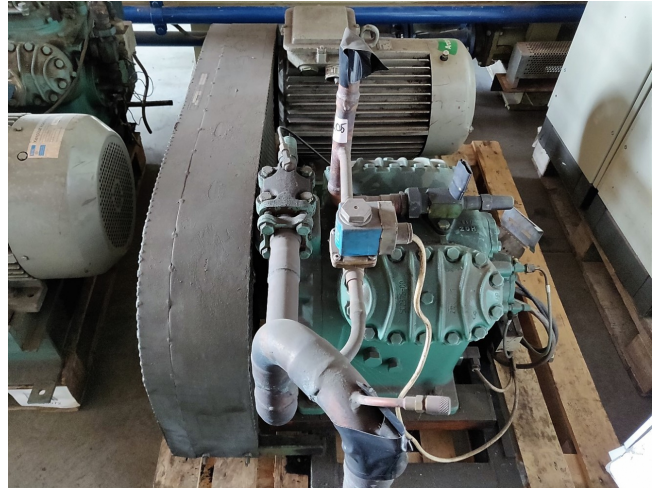


Bitzer 4G.2

Specifications

Marka	Bitzer
Typ	4G.2
Czynnik chłodzący	Freon
kW at 0°C/+40°C	70,8
kW at -5°C/+40°C	58,6
kW at -10°C/+40°C	48,1
kW at -20°C/+40°C	,31,1
kW at -30°C/+40°C	18,8
Silnik elektryczny Specs	20
Podstawa na stalowej ramie	✓
Uwagi	R404a - R22 or other freon types
Rozmiary	1200x700x600 mm (LxWxH)
1360	For more information please see attachment below
Stock	1



Description

Used Bitzer 4G.2

Used Bitzer 4H.2 Compressor on skit / 750-1750 RPM // Electromotor: Rotor-nl : XF160L04 / 20kW at 1445 RPM // yob 2007

